

Supporting Sustainable Rubber



SUPPORTING SUSTAINABLE RUBBER



Smallholders account for **85%** of world rubber production (WBCSD, 2019)



70% of Natural rubber production goes to tire production (ISRG, 2019)

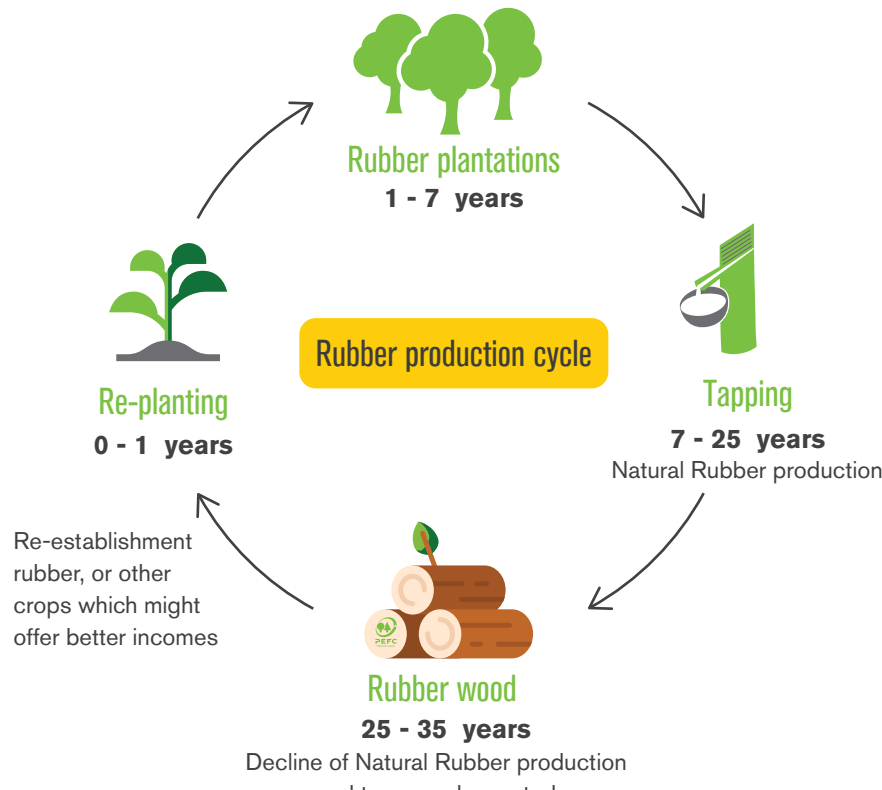
In South-East Asia, About **85%** of global Natural Rubber is produced in the tropical area



Rubber wood is the most widely traded tropical hardwood and most successful export timber of South-East Asia (FAO, 2015)

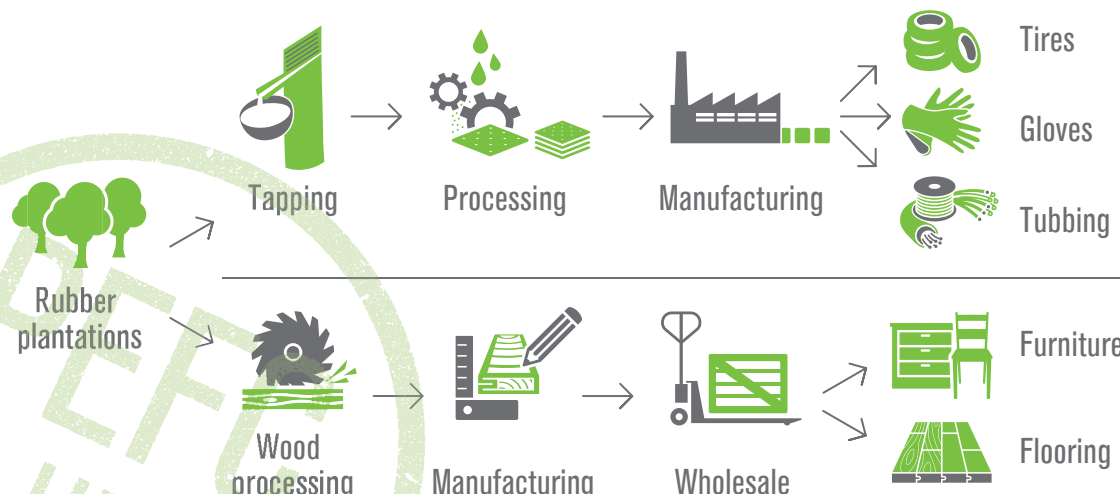


Hi, my name is Aree, I own three hectares of rubber plantation. I would like to show you the rubber production cycle and some key challenges we, smallholders face in the rubber industry.



Smallholders, the most important actors in the supply chain, are the most vulnerable. Their welfare is crucial to the success of all rubber-based industries

Rubber supply chains



Smallholder success depends on

- Reducing volatility in market demand and prices of Natural Rubber, and improving access to finance and market information;
- Maintaining and improving productivity through improved genetics and tapping techniques;
- Feasible compliance processes; and
- Appropriate practices to mitigate any undesirable environmental and social impacts.

Supply Chain Actors success depends on

- Reducing price volatility;
- Stabilising production- smallholders not changing from rubber to another land use;
- Demonstrating compliance with legality, traceability and sustainability standards;
- Addressing environmental issues and improving social issues such as working conditions, and human rights.

PEFC Forest Certification, feasible and accessible system for smallholders

Our unique approach

- Follows globally accepted ISO Guidelines to develop practical certification processes
- PEFC origins lies in smallholder support and this strong smallholder base is maintained, both operationally and philosophically.
- Balanced representation in stakeholders based on United Nation Agenda 21. Our multi-stakeholder approach helps bring the voice of smallholders to supply chain actors
- Bottom-up approach using national forest certification systems

NATIONAL FOREST CERTIFICATION SYSTEM



What does it mean for smallholders?

- Tailored to local needs and practices
- Appropriate and cost effective
- Voice of smallholders are heard

What does it mean for supply chain actors?

- Cost effective with local sourcing, local auditors
- Time effective with a management system settings that can be integrated with your existing ISO system
- Voices of supply chain actors are heard

PEFC's Criteria in our standards

Economically viable

- Ensure long-term productivity
- Optimum use of resources
- Diversify products and ecosystem services
- Balance harvest and growth rates

Environmentally sound

- Maintain and improve biodiversity and protect ecologically important forest areas
- Prevent deforestation and forest degradation, prohibit forest conversion
- Prohibit the most dangerous chemicals
- Improve carbon storage and reduce Greenhouse gas emission

Socially acceptable

- Respect and protect worker rights (comply with ILO conventions)
- Promote and involve forest communities
- Respect indigenous people's right include free, prior and informed consent (FPIC)
- Protect sites with recognised specific historical, cultural or spiritual significance

PEFC aims to provide sustainability certification systems appropriate to the rubber sector with ISO processes and PEFC standards, especially through innovative uses of Group certification and Trees outside Forests approach for the rubber plantations



PEFC Group Certification

provides a mechanism for smallholders to pursue certification together, which helps reduce costs and allow them to share roles and responsibilities.



Trees outside Forests (TOF)

The TOF framework can be applied to make specific requirements for natural rubber production systems

Impact projects for rubber

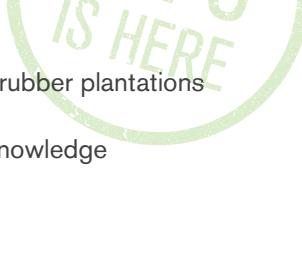
Members of PEFC	Malaysia	Thailand	Vietnam
Description	PEFC Controlled Sources for rubberwood	Certification for smallholder rubber plantation	Certification of industrial plantations
Product	Rubberwood	Natural Rubber, Rubberwood	Natural Rubber, Rubberwood
Impact	<ul style="list-style-type: none"> Utilise PEFC controlled sources for rubberwood to help smallholders access the EU market Potential expansion of scope into Natural Rubber 	<ul style="list-style-type: none"> Utilise existing farmer organization structures for large-scale group smallholders certification Market linkage between producers and consumers to ensure demand 	<ul style="list-style-type: none"> Ensure SFM to meet corporate policies Showcase national certification system for international market
Contact	www.mtcc.com.my +60321612298 info@mtcc.com.my	www.fti-tfcc.org +66 23451242 info2016.tfcc@gmail.com	www.vfcs.vnforest.gov.vn +84 384 387 92 vanphongvfco@gmail.com

PEFC acknowledges the contributions made by existing institutions and promotes collaboration with:



What can supply chain actors do to promote sustainable rubber and support smallholders

- Be PEFC certified and promote your PEFC-certified status to your supply chain
- Be inclusive of PEFC in procurement policies and commitments
- Become partners in joint-activities and projects to support smallholders of rubber plantations
- Support PEFC and our activities through financial support, expertise and knowledge
- Use the PEFC label to highlight your certification to your customers



"We need to work together to improve market access and productivity. I hope that you can partner with us and PEFC to improve our livelihoods!"



SUPPORTING SUSTAINABLE RUBBER

PEFC is the world's largest forest certification system
More than 330 million hectares of forests in 47 countries are managed sustainably against the PEFC standards requirements
Over 20,000 companies are PEFC certified in more than 70 countries

Choose **PEFC**

Caring for forests locally and globally

PEFC International | +41 (22) 799 4540 | dev.se.asia@pefc.org | www.pefc.org
ICC Building C level 1. Route de Pré-Bois 20 Case postale 1862. CH-1215 Geneva, Switzerland

