

Helping each other
deliver on our
GOALS

PEFC ANNUAL REVIEW **2022**



PEFC MEMBERS MEETING



The **PEFC Members Meeting in May in Dublin, Ireland**, was the first reunion of the PEFC Alliance after two years of travel restrictions and social distancing. We were delighted to see our members, stakeholders, and partners again for a week of exchange, discussions, and new inspirations.

Part of the PEFC Members Meeting in Dublin was the **Stakeholder Dialogue 'Mitigating Climate Change: Win with Wood'**. The event saw inspiring speeches and informed discussions about the enormous potential of sustainable timber in combatting climate change from speakers from a range of sectors, trading in or using wood-based products.



STAKEHOLDER DIALOGUE



ENDORSEMENTS



The regional forest management system for the Western Balkans achieved **PEFC endorsement**. Developed by our members for **Bosnia and Herzegovina, North Macedonia and Slovenia**, it is the second regional system to achieve PEFC endorsement.

Page 3

13 of our members called on professional and amateur photographers to take part in our **2022 Experience Forests, Experience PEFC Photo Contest**. We received 7500 photos showing life, work, and play in the forest. First prize went to Beate Magedin for her image 'Small Woods in a Big Forest', taken in Sweden.

Page 10



PHOTOGRAPHY



NEW CEO



The PEFC International Board appointed **Michael Berger** as **Secretary General/CEO**. Michael has worked at PEFC since 2011, and has over twenty years of experience in environmental and quality management, sustainable supply chain development, and management systems.

Together with the World Architecture Festival, we awarded the **Best Use of Certified Timber Prize**, rewarding architects for their use of certified timber in outstanding buildings. The prize went to **OHLAB** for the residential building **Paseo Mallorca 15**, a calm and green oasis in the heart of Palma de Mallorca, Spain.

Page 4



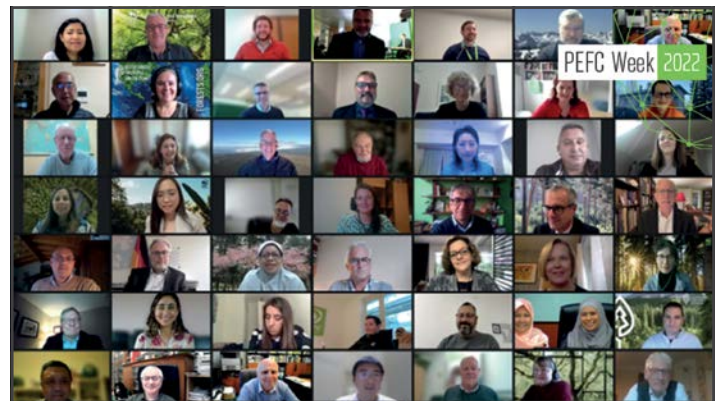
ARCHITECTURE

CONFLICT TIMBER



After the Russian invasion of Ukraine in spring 2022, the PEFC International Board clarified that all timber originating from Russia and Belarus is considered **conflict timber**. It therefore cannot be used in PEFC-certified products. The national systems for Belarus and Russia have been suspended in mutual agreement.

PEFC WEEK



November saw **PEFC Week 2022** and our **27th General Assembly**. The PEFC Alliance was united virtually for updates, discussions, and important decisions. We welcomed Eva Müller and Scott Robertson to the PEFC International Board, and elected Suzette Weeding as Vice Chair.



Moving forward together – innovation and collaboration within PEFC

Strengthening the system through innovation

We work to accelerate the uptake of forest certification globally through the innovation of our standards and requirements. In 2022, a new standard and two guidance documents were in the centre of our work.



A new guidance and standard

In 2022 we published the revised **GD 2001, Chain of Custody of Forest and Tree Based Products and Related Standards – Guidance for Use**.

The guidance document provides information for the implementation of the requirements in all three chain of custody related standards. It is easy to navigate and concentrates any additional information issued by PEFC for the implementation of these three standards in one single document. It also intends to be our first “living document”, updated regularly, for example, when new clarification and interpretations are issued.



Watch the webinars introducing the revised GD 2001 and ST 1004 at

treee.es/gd2001web

treee.es/st1004web



A new standard, **ST 1004 Requirements for Certification Bodies operating Certification**, went for public consultation at the end of 2022. It sets the requirements for certification bodies carrying out PEFC forest management certification. A hybrid between a Benchmark and International standard, it includes benchmark requirements to be further developed at national level, respecting our precious bottom-up approach. At the same time, it includes requirements that certification bodies shall directly implement, helping to harmonise the operation of PEFC certification worldwide.

Complying with the EU's revised Renewable Energy Directive (RED II)

PEFC has applied to the European Commission to be recognised as a sustainability certification under the European Union's (EU) RED II.

The Directive establishes sustainability requirements for forestry feedstocks and greenhouse gas criteria for biomass fuels that companies in the energy sector must comply with to be eligible for financial support by public authorities. PEFC's recognition scope covers

forest- and tree-based material, including recycled material and biomass fuels made of this material.

To align with RED II, we are developing a technical document, **GD 2002, Interpretations and supplements to PEFC standards**. The document can be implemented by chain of custody certificate holders wishing to extend the scope of their certification to show compliance with RED II requirements.

Better together – new developments and partnerships

We work to establish new partnerships and strong regional collaboration between our members and partners. 2022 saw innovation in Central Africa and new collaborations in Southeast Europe.

A sustainable first in the Congo Basin



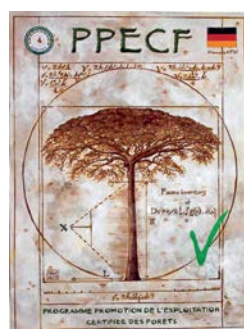
The regional system for the Congo Basin is driving innovation within PEFC. It is the first forest management system to include requirements related to the mapping of the carbon stock in a forest, and assessments of greenhouse gas emissions linked to forestry operations.

Born during the standard development process, the innovative requirements are a response to the new expectations that companies and forest owners are facing.

Forestry and environment consulting firm TEREa, supported by PEFC and the PPECF (Programme de Promotion de l'Exploitation Certifiée des Forêts), developed a methodology to map the carbon stock in a forest and an audit tool for greenhouse gas emissions, to help forestry companies meet the two requirements.

The regional system was developed by our members **PAFC-Congo**, **PAFC Cameroon** and **PAFC Gabon** under the lead of our international stakeholder member ATIBT, cooperating on the development of the PAFC Congo Basin certification system.

Our work in the Congo Basin was also the focus of our presentations at the 2022 United Nations Climate Change Conference (COP 27) in Egypt. PEFC International and PAFC Gabon highlighted the potential of sustainable forest management for sustainable development and the mitigation of climate change in the Congo Basin and beyond.



Regional collaborations on the rise

In 2022, another regional system achieved PEFC certification: the Balkan Forest Certification Scheme. Our national members for **Bosnia and Herzegovina**, **North Macedonia**, and **Slovenia** developed the system together, sharing resources and knowledge, and maximising their visibility in the region. The PEFC national member for Bulgaria and future member for Croatia have declared their interest in joining the regional system.

Helping each other reach higher – enhancing collaboration with sectors and partners

Outreach and engagement with the market

Today, sustainability is critical across all industry sectors. Products need to be produced in a manner that respects people and the planet, rather than contributing to climate change and deforestation, or resulting in poor working conditions. Forest-based products have an important role to play as the world moves away from fossil-based materials. At PEFC, we work with several sectors to increase their use of certified, forest-based materials for the benefit of our planet, whilst also helping industries reach their sustainability targets.

Designing the future with sustainable timber

"It is inspiring to see how construction with certified timber is developing. What were still dreams of the future just a few years ago is now a reality."

Fabienne Sinclair, Head of Marketing, PEFC International

Timber is becoming increasingly popular as a construction material, embraced by the architecture community for its versatility, flexibility and sustainability. Developments in engineered timber have pushed the boundaries of what is possible, allowing to build faster, higher and safer with timber.

To ensure that this increased demand for wood is not to the detriment of forest health, we promote the use of certified timber in construction.

In 2022, we continued our partnership with the World Architecture Festival and awarded the **Best Use of Certified Timber Prize** for the fourth time. The Prize recognises architects for their use of certified timber as a key element in outstanding projects.

The award went to **Paseo Mallorca 15**, designed by OHLAB. The residential building in Palma de Mallorca, Spain, has sustainability and energy efficiency at heart. The striking façade of PEFC-certified wooden slats plays with the light and shade, giving the building a special atmosphere.

In addition to the winning project, the jury honoured the **Växjö Town Hall and Train Station** by SWECO with a highly commended prize.

Our national members help us spread the word, reaching out to the architecture community in their countries. Projects around the globe showcase the enormous potential of timber construction. From healthy indoor climates to prefabrication and the ability to dismantle and relocate buildings, they offer a glimpse of a new era of construction.



World Architecture Festival 2022
Lisbon

Best Use of Certified Timber Prize 2022
Supported by PEFC



Paseo Mallorca 15



Växjö Town Hall and Train Station



Discover our case stories:

treee.es/construction-stories

Read more about our work with the construction sector:

treee.es/sustainableconstruction



"Our Three Rs campaign of renewable, responsibly sourced, and recycled packaging, helps protect our forests, promotes fair labour practices, and moves us closer to a more sustainable future for our forests."

Jon Horton, Market Engagement Manager, PEFC International

Renewable, recyclable, responsible packaging

Moving away from fossil-based materials such as plastics is an important step in making our world more sustainable. Wood-based recyclable packaging can play a major role in this effort, but we must ensure that it never comes at the expense of forests.

As one of the largest consumers of wood, the paper and packaging industry has a special role to play in using our forests sustainably. Together with our members and partners in the packaging sector, we work to raise awareness for the enormous potential of sustainable paper packaging within the circular economy.

Our approach to Responsible Packaging brings together **the three Rs – Renewable, Responsibly Sourced, and Recycled.**



Renewable

Responsibly Sourced

Recycled

This approach combines sustainable forest management with safe working conditions and respect for human rights along the supply chain. Recycled materials help reduce the productive demand on forests, contributing to a responsible packaging solution.

Joining forces to make a difference

We teamed up with several of our national members and partners, companies and stakeholders, to encourage the use of PEFC-certified materials in packaging and promoting circular economy principles while reducing waste.

Through a range of resources, including events, webinars and case studies, we spread the message about responsible packaging practices, driving positive change in the industry. By adopting this responsible approach to packaging, we can contribute to the long-term health and viability of our forests and the planet as a whole.



Join us! Contact us at
packaging@pefc.org

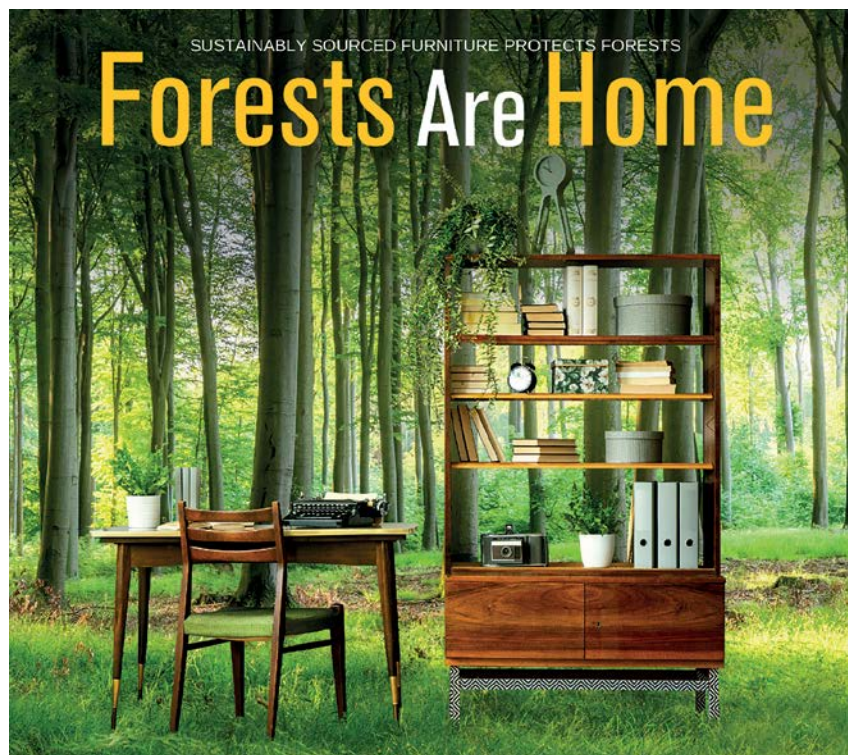
Learn more about PEFC-certified responsible packaging:
treee.es/packaging

"One simple step we can all take to help keep forests as forests is to choose PEFC-certified wooden furniture."

Huong Maggi, Marketing Officer, PEFC International

Raising the bar for furniture sustainability

With increased awareness for sustainability around the world, demand for wooden furniture is on the rise. At PEFC, we are convinced that using forest-based materials and forest protection can go hand in hand.



We are bringing wood suppliers and furniture manufacturers together to work towards a sustainable furniture industry and a bright future for the world's forests. 15 national members, representing over 51 million hectares of certified forests, and thousands of furniture manufacturers and retailers have joined our effort.

Continuing our successful collaborations in 2022

Our cooperation with the **ASEAN Furniture Industry Council (AFIC)**, which started in 2021, has made great progress in 2022. Together we foster connections with PEFC-certified companies in the ASEAN region, helping them build wood sourcing policies, and raising awareness of sustainability in the furniture industry.

We continued our work with Italian High School **ENAIPTesero** on a four-year education programme covering sustainability in the wood supply chain – from the protection and management of forest ecosystems to the traceability and legality of wood.

In a PEFC webinar, Dr. Francesco Negro, carbon storage expert from the University of Torino, explained the process of carbon storage in wooden furniture and how to calculate the amount that is stored. Due to the large interest in the topic, we will launch a Carbon Storage Calculation Project in 2023. The project helps companies calculate the carbon stored in wooden furniture products, providing useful information for life cycle assessments or sustainability reports. Stay tuned!

Join us! Contact us at
furniture@pefc.org



Join 'Forests Are Home'

An important part of our work is to highlight the sustainability stories of certified companies and PEFC ambassadors. Do you manufacture and sell PEFC-certified wooden furniture? Let's raise awareness for sustainable furniture together!

Watch the webinar on carbon storage in wooden furniture:
treee.es/CarbonWebinar

Access free training and learn more about certified wooden furniture:
furniture.pefc.org/training

"Throughout the year, we have witnessed several fashion brands and retailers making concrete public commitments towards sourcing MMCF from sustainably managed forests. This is an exciting development."

Julia Kozlik, Marketing Manager, PEFC International

Forest fibres for a sustainable fashion industry

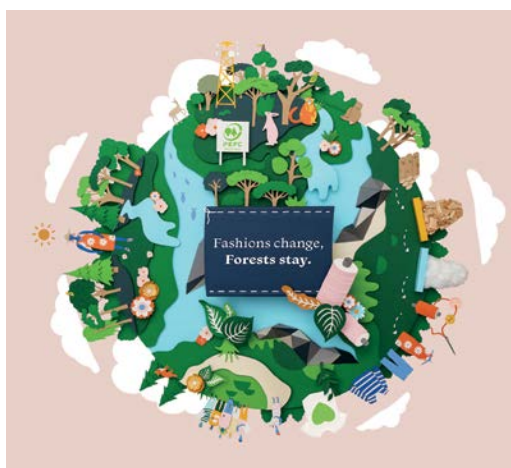
As consumers become increasingly aware of the negative environmental impact that fashion can have, the demand for sustainable fashion is rising. Choosing fibres from sustainably managed forests appeals to eco-conscious consumers and is a big positive step businesses can take towards climate action.

Man-made cellulosic fibres (MMCF) consume relatively low levels of water and energy. If they come from a sustainable source, they even help safeguard our forests.

In 2022, we continued to raise awareness for this innovative solution and the benefits it brings to companies and our planet, together with our members and various partners in the textile sector.

We were honoured to be among the principal industry experts to provide input into the first edition of the **Global Fashion Agenda (GFA) Monitor**, a new report to guide fashion leaders towards a net positive fashion industry. Released as part of the **Global Fashion Summit** in Copenhagen, the report fosters collaboration on sustainability in fashion to accelerate impact.

At a brunch co-hosted with GFA, we welcomed GFA Monitor impact partners to discuss how our shared guidelines and actions can help the industry move towards sustainable fashion.



2022 marked the first year of our partnership with the **Textile and Fashion Federation (TaFF)**. At the centre of our work was the promotion of responsible sourcing, driving awareness of the importance of choosing legal and sustainable materials. The second phase of the partnership, which started in December, will introduce sustainability aspects in the forestry supply chain relevant to the fashion industry, including natural rubber and packaging, and explore collaborations with PEFC members.

Join us! Work with us on promoting forest fibres from sustainably managed forests.

Contact us at
textile@pefc.org



"The green economy welcomes transformational progress in the natural rubber sector. No single organisation can do everything, but everyone in every organisation can do something."

Shawn Goh, Value Chain Manager, PEFC Asia Pacific



Upgrading the natural rubber sector

Natural rubber is a highly versatile resource whose utility is matched by few other materials. It is present in over 40,000 products, in some of which even synthetic rubber cannot be used as a substitute. While natural rubber is essential to modern life, it also has a role to play in safeguarding our forests and the livelihoods of millions of smallholders.



We are working closely with the rubber sector, helping the natural rubber- and rubberwood-producing smallholders and processing companies prove their sustainable practices by obtaining PEFC certification.

Intensifying collaborations in 2022

The **World Rubber Summit** gathers industry leaders, experts, and government representatives with the aim of advancing a more inclusive and sustainable rubber sector. We joined forces with the summit organiser **International Rubber Study Group (IRSG)** to contribute to that goal by expanding the tools and support available to rubber smallholders and corporations around the world. The summit saw the announcement of our new memorandum of understanding with IRSG, agreeing on an even closer collaboration.

Since 2010, our **Smallholder Group Certification programme** has facilitated cooperation amongst family forest owners, community forest groups, and Indigenous Peoples in implementing sustainable forest management and pursuing forest certification. Within this programme, we held a series of webinars, in which our members from Thailand, Vietnam, Finland, Germany and Spain shared knowledge and experience on group certification for smallholders, including rubber producers.



Join us!

In partnership with rubber stakeholders at local and national levels, we have laid the foundation to empower and upskill these smallholder communities. We are now looking for partner organisations and companies to work with us on scaling group certification that enables quality assurance and quality control, and results in an improvement of the livelihoods of rubber smallholders. If you are interested, please contact shawn.goh@pefc.org.

Watch the webinar recordings:

treee.es/GroupCertWebinars

To learn more about sustainable natural rubber, visit

rubber.pefc.org

Regional impact of our national quality infrastructure development

2022 marked the second year of the collaboration between our PEFC FOR-TRADE project and the UN-REDD Initiative: *Promoting Sustainable Forest Trade in the Lower Mekong Region (SFT-LMR)*.

The **PEFC FOR-TRADE** programme stands for **Forestry and Trade for Development in the ASEAN region**. It works to strengthen trade through the institutionalisation of forest certification infrastructure, and to enhance the development of national forest certification systems in Southeast Asia.



FOR-TRADE
FORESTRY & TRADE FOR
ASEAN DEVELOPMENT



SFT-LMR aims to reduce pressure on forests through improved governance in Cambodia, Laos, Myanmar, Thailand, and Vietnam. In 2022, we continued working towards this aim, with positive results in several areas.

Important steps were made in Cambodia and Laos towards establishing national forest certification systems, while our national members for Vietnam and Thailand made significant improvements in their governance mechanisms.



Chain of custody certification became a focus in the second year of the SFT-LMR initiative. The growing interest was reflected in the number of companies moving actively forward to obtain certification. The initiative also supported the development of our Due Diligence System (DDS) toolkits, improving traceability and minimising the risk of timber products from controversial sources entering supply chains, which is central to developing responsible and sustainable trade in the ASEAN region.

Finally, communications played an important role, and we continued to share news, best practices, and market linkages between supply chain actors, focusing on the rubber and furniture sectors.



Collaborate with us to
support smallholders on
their sustainability journey:

treee.es/FOR-TRADEcollaboration



"I love the forest. It is a retreat and a source of inspiration at the same time."

Beate Magedin, 2022 PEFC Photographer of the Year

Helping actors become ambassadors

We are reaching out and giving the word to the people on the ground, to hear what forests and certification mean to them, making people and companies around the world our ambassadors for sustainability and forest certification.



Hearing from photographers and forest lovers



The 2022 edition of our **Experience Forests, Experience PEFC** Photo Contest brought us wonderful forest photos and inspiring stories from photographers around the globe.

13 of our national members invited photographers in their countries to submit their best forest photos. We received 7,500 stunning images, taking the viewer on a journey through the world's forests. The best photos from the national contests entered the international contest for the chance to become the PEFC Photographer of the Year.

"Forests are the lungs of the Earth, a place for plants to grow, and a source of oxygen."

Mujiono Dewa Kelana, Indonesia

13 countries, 7,500 photos, 1 winner

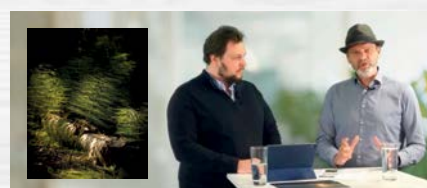
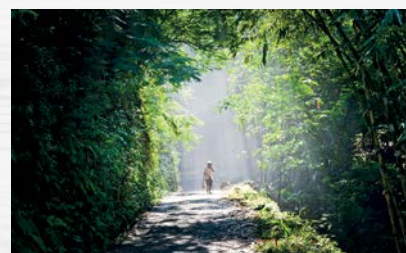
First prize went to Beate Magedin from Sweden for her photo 'Small Woods in a Big Forest.' The photo shows an unusual perspective of the forest, putting the often-overlooked details in the spotlight.

"Most people photograph either the complete landscape or the macro world. I do something in between," she explained.

The winning photo was announced in an online session on **Facebook Live**. We discussed the photos in the finals with photographer Lukas Prins, helping the audience to see them through the eyes of a professional, and discover even more details. We also heard from the winner herself, who took us to a wonderful Swedish forest and shared how her winning photo came about.



Besides giving us gorgeous forest photos, the annual photo contest is a chance to hear from forest lovers around the world. The 12 finalists shared the stories behind their photos, forestry in their countries and what the forest means to them.



Read the stories at
treee.es/PhotoContest

Watch the winner announcement:
treee.es/2022PhotoContest

Giving the word to rural women

For International Day of Rural Women, we highlighted the work of women in forestry. But rather than speaking about those women, we gave the word to them.

Female forest owners and managers, forestry researchers and teachers told us about their daily work and what makes them passionate about forests.

In a series of interviews, they took us back into their childhood, when they first became interested in forestry, shared how their jobs have changed over time, and how certification is making a difference.

Women still face discrimination when it comes to land and livestock ownership, equal pay, and participation in decision-making entities – also in the forestry sector. Empowering them is critical in the fight against extreme poverty, hunger, and malnutrition.



"My work has changed over the years: now we focus more on biodiversity and the environmental impact, and not only on production."

Monica Persson
Forest owner in Sweden

"I use PEFC certification to guide forest owners, to make their activity more sustainable and improve their performance."

Filipa Gouveia
Founder of KS.SOLUTIONS



"In Portugal, PEFC certification has had a very strong impact on forest management at social, environmental and economic level."

Joana dos Guimarães Sá
Forestry engineer at certification body APCER, Portugal

Discover their stories:

pefc.org/rural-women

Debunking myths on International Day of Forests

Do timber buildings burn easily?
Do trees release their stored timber once they are felled?

There are still many myths and misconceptions about forests and forest products, making consumers hesitant of buying wooden furniture, using paper packaging, or building their homes in timber.

For International Day of Forests, we rectified the most prevalent myths about forests and forest products, celebrating the many known and lesser-known uses of forest products, and raising awareness for the enormous potential of sustainable timber.



Exchange and collaboration at EU level



PEFC meets in Brussels

PEFC members from around the world gathered in the Belgian and EU capital in September to progress our work at the level of the Board and regional and thematic working groups. The week held inspiring discussions and productive meetings among PEFC members and with EU actors.



With the message of the week: "PEFC is here to support", this was also an opportunity for our Board of Directors to meet the representatives of the European Commission and the European Parliament, and exchange on ongoing topics related to sustainable forests.



A new Working Group for EU-related matters

The week in Brussels was also the opportunity for the first meeting of our EU affairs Working Group, which was established in April 2022. Aiming to support our efforts at EU level, the new PEFC platform will closely look at EU policy developments and processes impacting our system, and exchange on key EU priorities.

Engagement at EU level for a collective impact

To amplify our collective impact in safeguarding the EU's and the world's forests, PEFC partners with a wide range of stakeholders. We strongly believe that increased engagement with EU institutions and stakeholder representatives can bring us a step closer to our common goals.

The work of the European Commission and applicable EU legislation impacts PEFC's standard-setting. Thanks to PEFC's readiness to adapt and contribute to the solution, our certification already acts as an important part of the EU forest toolbox. We will continue to work towards providing an improved understanding of PEFC's role and the value voluntary forest certification has in supporting the EU policy objectives on the ground – as a multiplier to help give the EU legislation an impact beyond the EU, but also as a strong believer in dialogue and consensus.



"The positive results in the various assessments confirm the ongoing quality and robustness of our standards."

Thorsten Arndt, Head of Communications, PEFC International

How PEFC meets best practice

Trust in the PEFC label is key to our work. To ensure that everyone, from foresters to consumers, has confidence in our label, PEFC is regularly evaluated both through self-assessments and by independent third parties.

In 2022, we undertook a self-assessment against the Accountability Framework, with input received from the Accountability Framework initiative (AFi), a collaborative effort to build and scale up ethical supply chains for agricultural and forestry products.

In 2019, the AFi launched the Accountability Framework, a set of common principles, definitions, and guidance to support companies in addressing deforestation, conversion, and human rights impacts of supply chains.

The assessment found that PEFC is generally aligned with the Accountability Framework on the topics related to no-deforestation, respecting all human rights, and respect for the rights of indigenous peoples, local communities, and workers.

Other notable external recognitions include:



The Consumer Goods Forum (CGF), whose Pulp, Paper, and Fibre-based Packaging (PPP) Roadmap

highlights the role of certification systems such as PEFC as **a key tool to combat deforestation**.



The Climate Bonds Initiative, whose "Forestry Criteria" lay out the requirements

that forestry infrastructure assets or projects must meet to be included in a Certified Climate Bond. PEFC certification is accepted as **eligible to demonstrate compliance with the 'Forestry Criteria'**.



The Sustainable Development Goals (SDGs), which recognise PEFC as an official indicator towards **SDG**

Indicator 15.2.1 – Progress towards sustainable forest management.



The ASEAN Guidelines on Promoting Responsible Investment in Food, Agriculture and Forestry (ASEAN RAI), with the report "Mapping of Industry and Investment Standards and Principles to the ASEAN RAI", gives PEFC **the highest ranking (9.5 out of 10 points)** in the assessment against the ASEAN RAI Guidelines.





PEFC membership

Statistics, facts & figures



National members represent PEFC
in **55** countries

288 million hectares
of forests globally
are PEFC-certified

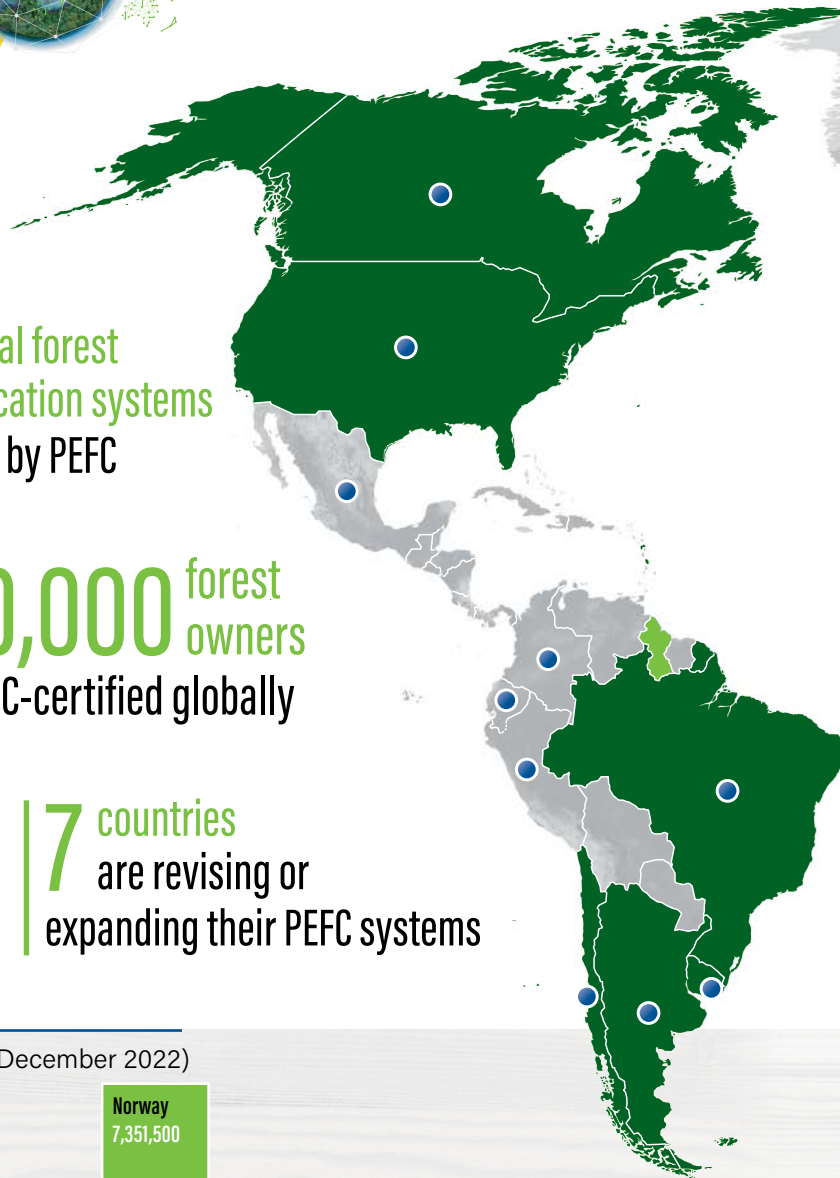
2022 saw large increases of certified forest area in **Africa**, **Asia** and **Oceania**, and small decreases in **America** and **Europe**. The most notable change of certified area occurred due to the suspension of the PEFC systems for **Russia** and **Belarus**, following the Russian invasion of **Ukraine**, leading to a loss of 39 million certified hectares in both countries together.

Asia saw a large increase of PEFC-certified area growing by 20% to nearly 17 million hectares. **Malaysia**, **Republic of Korea**, and **Vietnam** had the biggest increase on the continent. Only four years after we celebrated the first PEFC-certified hectares in **Africa**, the area grew by 29% to 290,000 hectares, thanks to large increases in certified area in **Gabon**.

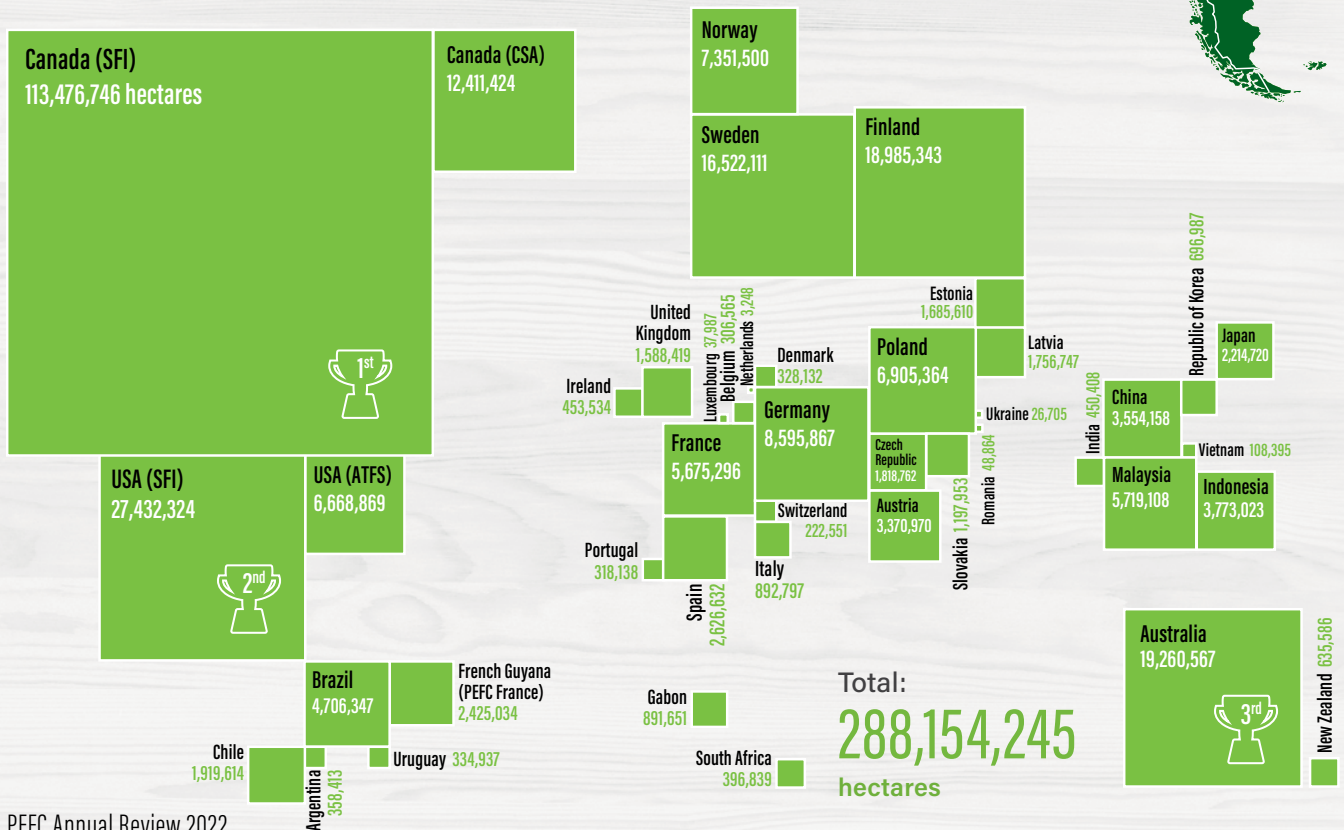
48 national forest
certification systems
are endorsed by PEFC

750,000 forest
owners
are PEFC-certified globally

7 countries
are revising or
expanding their PEFC systems

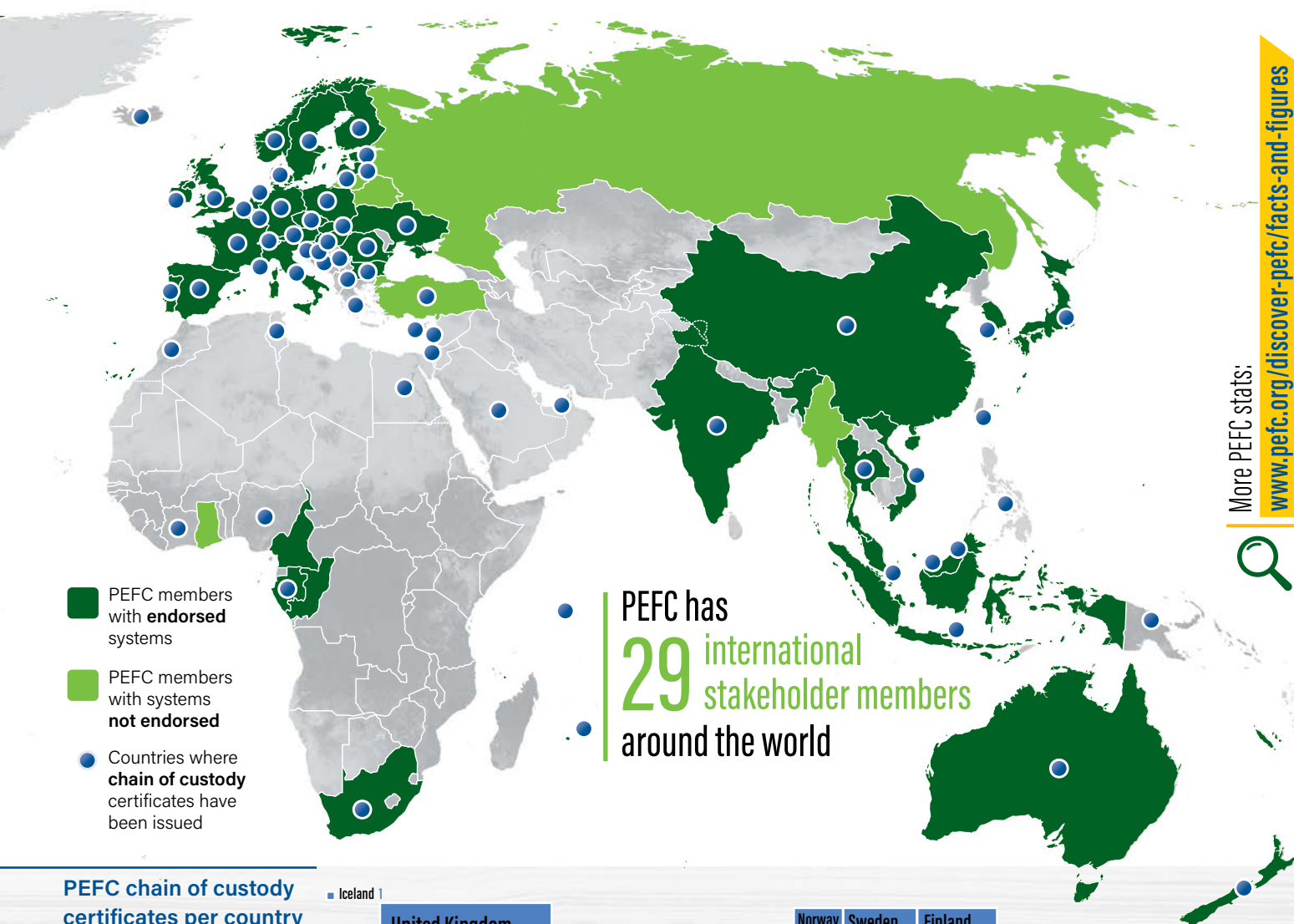


PEFC-certified forest area per country (as of 31 December 2022)





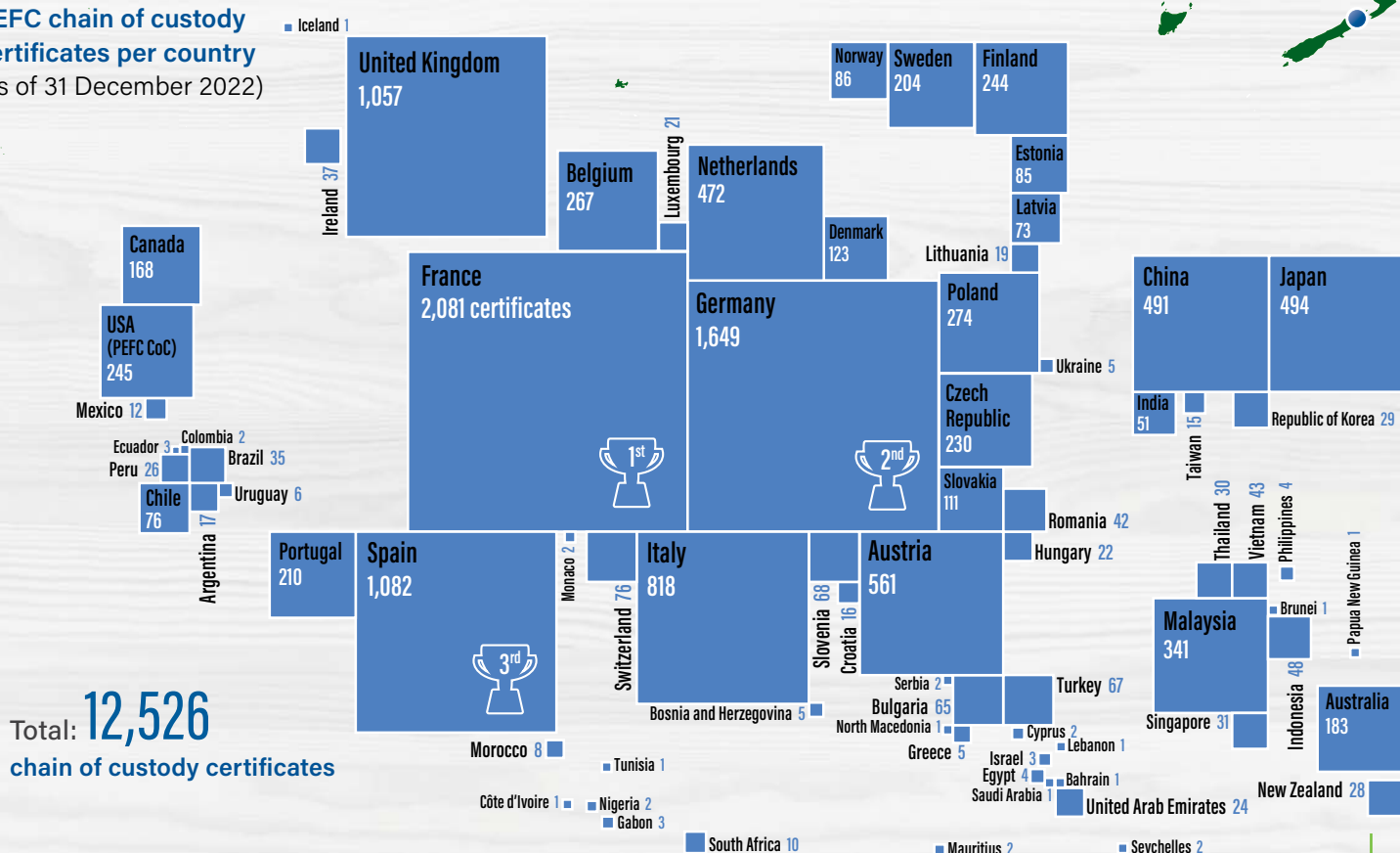
More than **20,000** companies in the world benefit from PEFC's chain of custody certification



PEFC has **29** international stakeholder members around the world

More PEFC stats:
www.pefc.org/discover-pefc/facts-and-figures

PEFC chain of custody certificates per country (as of 31 December 2022)



PEFC members

Endorsed members and systems (as of 31 Dec. 2022)

Country	Name
Argentina	Argentine Forest Certification System (CERFOAR)
Australia	Responsible Wood
Austria	PEFC Austria
Belgium	PEFC Belgium
Bosnia and Herzegovina	Association of Private Forest Owners "Naša Šuma"
Brazil	Instituto Pró Manejo Florestal
Bulgaria	Council for Sustainable Forest Management and Certification in Bulgaria
Cameroon	Cameroonian Association of the Pan African Forestry Certification
Canada	PEFC Canada, Sustainable Forestry Initiative (SFI)
Chile	Chile Forest Certification Corporation (CERTFOR)
China	China Forest Certification Council (CFCC)
Czech Republic	PEFC Czech Republic
Denmark	PEFC Denmark
Estonia	Estonian Forest Certification Council
Finland	PEFC Finland
France	PEFC France
Gabon	PAFC Gabon
Germany	PEFC Germany
Hungary	Hungarian Forest Certification Non-profit Ltd.
India	Network for Certification and Conservation of Forests (NCCF)
Indonesia	Indonesian Forestry Certification Cooperation (IFCC)
Ireland	PEFC Ireland
Italy	PEFC Italy
Japan	Sustainable Green Ecosystem Council (SGEC)
Latvia	PEFC Latvia
Luxembourg	PEFC Luxembourg
Malaysia	Malaysian Timber Certification Council (MTCC)
Netherlands	PEFC Netherlands
New Zealand	New Zealand Forest Certification Association (NZFCA)
North Macedonia	The Council for Sustainable Forest Management in the Republic of Macedonia
Norway	PEFC Norway
Poland	PEFC Poland
Portugal	PEFC Portugal
Republic of Congo	PAFC-Congo

Country	Name
Republic of Korea	Korea Forestry Promotion Institute (KoFPI)
Romania	PEFC Romania
Slovakia	PEFC Slovakia
Slovenia	Institute for Forest Certification
South Africa	South African Forestry Assurance Scheme (SAFAS)
Spain	PEFC Spain
Sweden	PEFC Sweden
Switzerland	PEFC Switzerland
Thailand	The Federation of Thai Industries (F.T.I.)
Ukraine	Association National Voluntary Forest Certification System
United Kingdom	PEFC UK
United States	PEFC USA: American Tree Farm System (ATFS), Sustainable Forestry Initiative (SFI)
Uruguay	PEFC Uruguay
Vietnam	Vietnamese Academy of Forest Science (VAFS)

Non-endorsed members (as of 31 Dec. 2022)

Country	Name
Belarus	Republican Association of Forest Certification System
Ghana	Working Group on Forest Certification
Guyana	Guyana Forestry Commission (GFC)
Lithuania	PEFC Lithuania
Myanmar	Myanmar Forest Certification Committee (MFCC)
Russia	PEFC Russia
Turkey	Association for Sustainable Forest Management, Forest Products and Services Certification

System News 2022

Received endorsement:

- Balkan Forest Certification Scheme

Received re-endorsement:

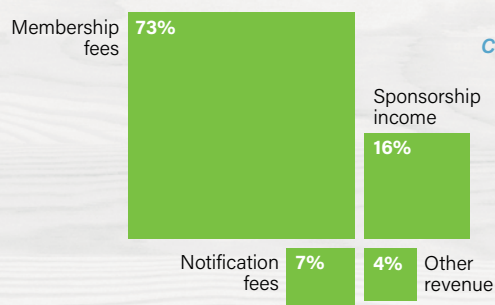
- China Forest Certification Council (CFCC)
- Indonesian Forestry Certification Cooperation (IFCC)
- PEFC Denmark
- PEFC Germany
- PEFC Netherlands
- PEFC Slovakia
- PEFC Uruguay
- SGEC/PEFC Japan
- Sustainable Forestry Initiative (SFI)

Financial information

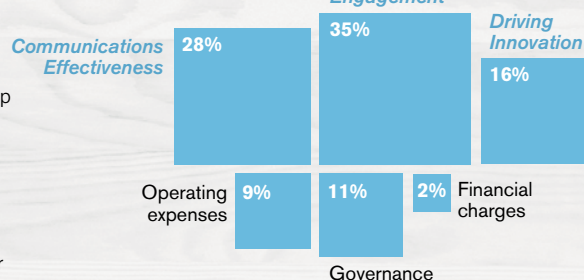
Budget summary:

In 2021, PEFC operated on a total income of about CHF 5.9 million.

Income sources 2021



Expenditure 2021



International Stakeholder members:

- APP Timber
- Arauco
- Asia Pacific Resources International Holdings Ltd. (APRIL Group)
- Association Technique Internationale des Bois Tropicaux (ATIBT)
- Bioenergy Europe
- Building and Wood Worker's International (BWI)
- Confederation of European Forest Owners (CEPF)
- Confederation of European Paper Industries (CEPI)
- Double A
- European Confederation of Agricultural, Rural and Forestry Contractors (CEETTAR)
- European Panel Federation (EPF)
- European Pulp Industry Sector Association AISBL (EPIS)
- European Timber Trade Federation (ETTF)
- European Tissue Symposium (ETS)
- International Council of Forest and Paper Associations (ICFPA)
- International Family Forestry Alliance (IFFA)
- Metsä Group
- Mondi
- Olam International
- Purinusa Ekapersada (APP)
- Regional Community Forestry Training Center for Asia and the Pacific (RECOFTC)
- Sappi
- Smurfit Kappa
- Stora Enso
- Suzano Pulp and Paper
- Union of Silviculturists of Southern Europe (USSE)
- UPM-Kymmene Corporation
- WestRock Company
- Weyerhaeuser Company

Extraordinary members:

- European Confederation of Woodworking Industries (CEI-Bois)
- European Landowners' Organization (ELO)
- Fédération Européenne des Communes Forestières (FECOF)
- Manufacturers of Educational & Commercial Stationery European Association (MECSEA)
- Union of European Foresters (UEF)

PEFC Board members

CHAIR

Eduardo Rojas Briales

VICE CHAIRS

David Ford

Suzette Weeding

BOARD MEMBERS

Dradjad Wibowo

Gerald Pfiffinger

Kurt Ramskogler

Mohd Nurudeen Iddrisu

Fatimah Mohammad

Lena Ek

Sara El Kadri

Guy Gleysteen

Richard Ali

Eva Müller

Scott Robertson

PEFC International team

Michael Berger
Secretary General/CEO

Sandrine Laffitte
Office Manager/PA to the CEO

Gill Parker
Finance Manager

Siti Syaliza Mustapha
Deputy Secretary General/COO

Stephan Decaillet
Senior Finance Manager

Ludovic Falcon
Finance Officer

Office of the Secretary General



Communications

Thorsten Arndt
Head of Communications

Hannah Prins
Communications Manager

Anja Gehr
Communications Officer

Marketing

Fabienne Sinclair
Head of Marketing

Julia Kozlik
Marketing Manager

Huong Maggi
Marketing Officer

Jon Horton
Market Engagement Manager

Technical

Marta Martínez Pardo
Technical Manager

Linda Matole
Technical Officer

Hubert Inhaizer
Technical Officer

Lise Favre
Technical Officer

Nga Ha
Technical Officer

Luca Saccone
Junior Technical Officer

EU Affairs

Maja Drča
EU Representative

Members Services

Rémi Sourmia
Members Services Manager

Thomas Seyvet
Members Services Officer

PEFC Southeast Asia

Benson Yu
Regional Manager China

Richard Laity
Southeast Asia Manager



PEFC International
ICC Building C1
Route de Pré-Bois 20
1215 Geneva 15
Switzerland

t +41 22 799 45 40
e info@pefc.org
www.pefc.org

